



## ***JL Crawler™ / Bruiser™ Rear Bumpers***

**IMPORTANT:** Thank you for purchasing this Poison Spyder product. Please read through this entire document before proceeding with installation. If you are not confident in your mechanical skills, please seek the help of a professional to perform the installation. Check your packages immediately upon arrival to ensure that everything listed is included, and to check for damage during shipping. If anything is missing or damaged, or if you need technical assistance with any aspect of this installation, call Poison Spyder at (951) 849-5911 as soon as possible. This document last updated July 2018.

### ***APPLICATIONS***



**19-65-010P1 JL CRAWLER REAR  
BUMPER**

**19-67-010P1 JL BRUISER REAR  
BUMPER**



### ***PARTS LIST***

- (1) **19-65-010P1 JL CRAWLER REAR BUMPER or 19-67-010P1 JL BRUISER REAR BUMPER**
- (1) **NUT PLATE**
- (2) **LOWER SPACERS**
- (1) **RIGID PLASTIC LOCKING PLUG**
- (1) **HW-19-65-010 HARDWARE KIT**

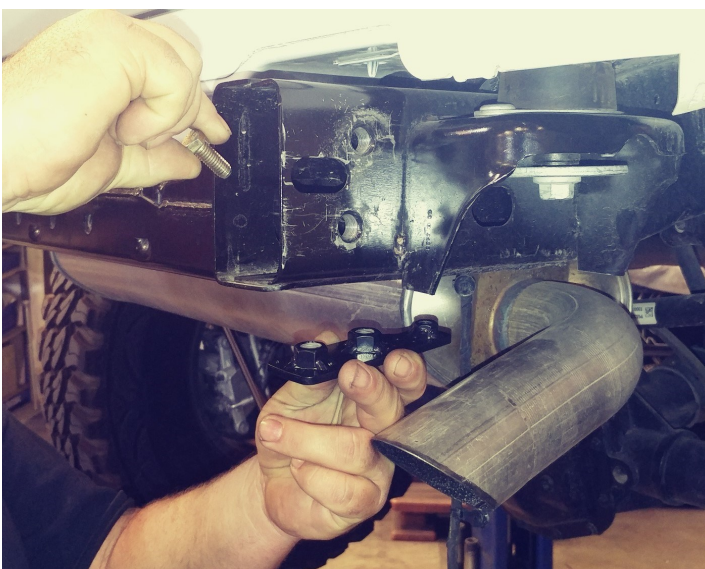
- Includes:
- (1) 1/2"-13x4.25" GRADE 8 BOLT
  - (2) 1/2"-13x1.5" GRADE 8 BOLT
  - (2) 1/2" GRADE 8 SPLIT LOCK WASHERS
  - (2) 1/2" GRADE 8 FLAT WASHERS
  - (1) 1/2"-13 GRADE 8 NYLOCK NUTS
  - (1) 3/8"-16x1.5" GRADE 8 BOLT
  - (1) 3/8" GRADE 8 SPLIT LOCK WASHER
  - (4) RUBBER CAPS

## ***SUGGESTED TOOLS***

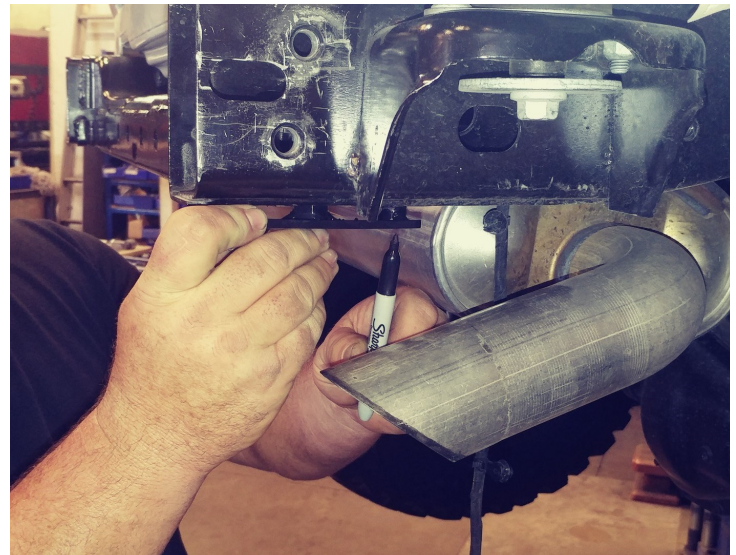
- ***Mechanic's tool set with a full assortment of SAE and metric end wrenches, sockets, ratchets, hex keys, etc.***
- ***Measuring tape or ruler***
- ***Felt-tip fine point marker, scribe or punch***
- **1/2" RATCHET WRENCH WITH 21MM, 18MM, 16MM, 3/4", AND 9/16" SOCKETS**
- **DRILL MOTOR WITH 1/8" AND 3/8" DRILL BITS**
- **3/4" OPEN END WRENCH**

## ***INSTALLATION PROCEDURE***

1. Park the Jeep on a flat, level surface and set the parking brake.
2. Remove the OEM rear bumper and all brackets. Retain all stock hardware, these will be used to install the new Poison Spyder rear bumper.
3. The passenger side of the JL frame horn does not have factory "weld nuts". Install the supplied "nut plate" underneath the passenger side frame rail by passing the supplied 1/2" bolts through the frame horn (**IMAGE-01**).
4. Once the nut plate is square and secure, use a felt pen or center punch to locate the center of the 3/8" nut. (**IMAGE-02**).



**IMAGE -01**



**IMAGE -02**

5. Remove the nut plate and drill the 3/8" hole. (**IMAGE -03**).
- **NOTE\*** The exhaust may be in the way of the drill. Use a ratchet strap to GENTLY pull out of the way if needed.





IMAGE - 03

6. Using the supplied 3/8-16" X 1" bolt and 3/8" split lock washer, install the nut plate inside the frame horn lining up the two other weld nuts with the corresponding holes in the frame horn (IMAGE-04).

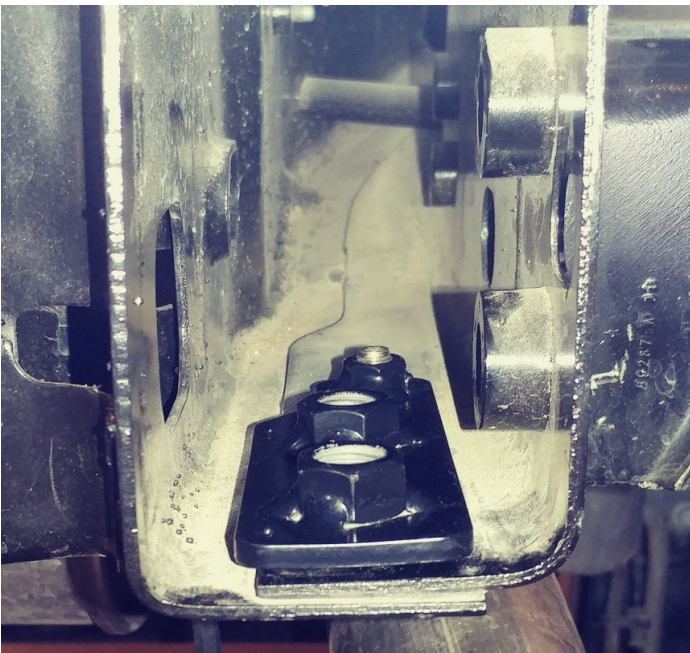


IMAGE -04

7. If you have not already, install the rear facing lights now. You cannot access these after the bumper is installed.

8. Line up the rear bumper with the rear frame horns. Place the supplied "Lower Spacers" in their intended location on the bumper (IMAGE-05) and (IMAGE-06).

- **NOTE\*** These parts are not symmetrical and will only fit one way.



IMAGE -05

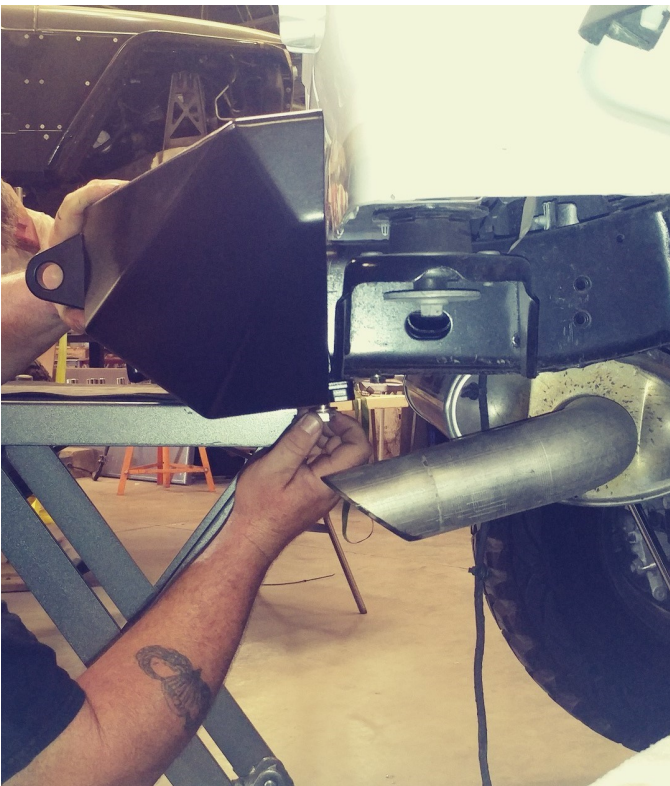


IMAGE-06



9. **Carefully install** the rear bumper. Try not to disrupt the spacers. Also be careful not to pinch the rear facing light plugs. Once in place, install the two 1/2-13 X 1.5" bolts and 1/2" split lock washers through the bumper and passenger side frame horn, and thread into the previously installed nut plate (**IMAGE -07**).

- **NOTE\*** This will most likely require a helper or a "cart" that is the appropriate height.



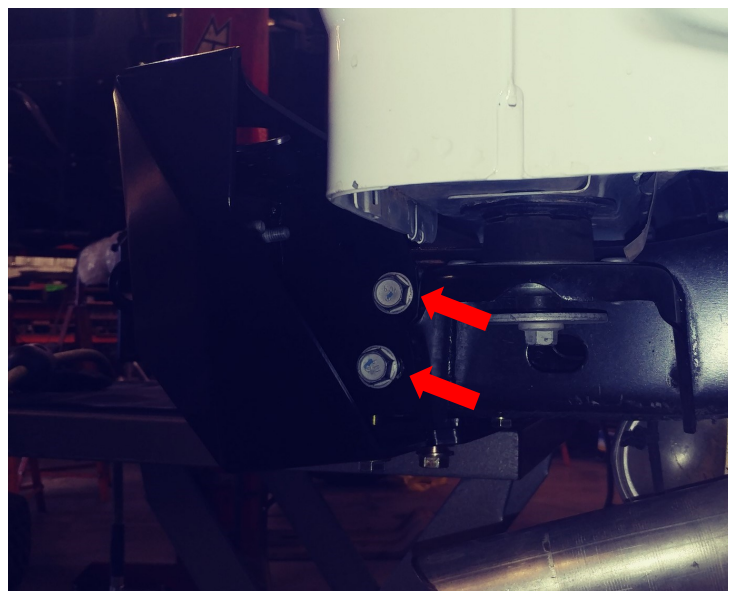
**IMAGE -07**

10. **Install the OEM hardware** through the driver side bottom of the bumper, through the driver side rear frame horn, and thread into OEM weld nuts. (**IMAGE -08**).



**IMAGE -08**

11. **Re-install both** driver and passenger side OEM hardware into the original bumper mounting holes (**IMAGE -09**).



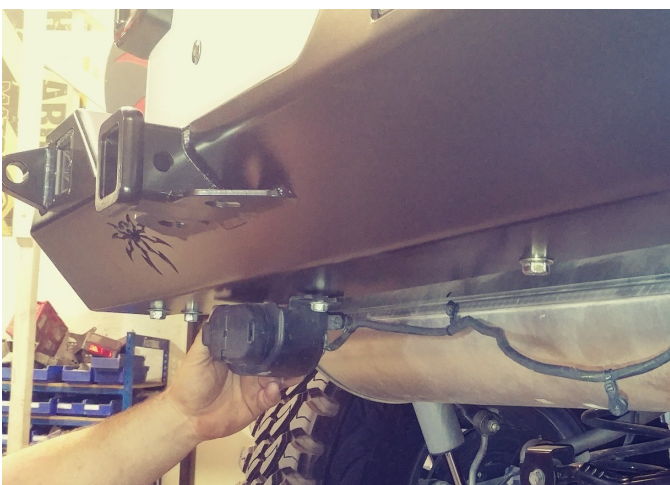
**IMAGE -09**

12. **Install the provided 1/2-13" X 4-1/2"** and 1/2" flat washer through the passenger side bottom of the bumper, through the stock crossmember, and with your other hand, install the other 1/2" flat washer and 1/2" ny-lock nut (**IMAGE -10**).



**IMAGE -10**

13. **If your jeep** came with a towing package and you wish to install the plug receiver into its intended location, do so now using the OEM hardware. Otherwise, re-install the OEM hardware directly into the bumper (**IMAGE -11**).



**IMAGE -11**

14. **Making sure** the bumper is "square" and "level", tighten all hardware.

- Reaching the 1/2" nut above the crossmember will require a 2/4" open end wrench (**IMAGE -12**).
- **Torque all hardware to at least 45 ft.-lbs.**



**IMAGE -12**

15. **Install the** rigid plastic locking plug, and the rubber hardware protector caps over the exposed tire carrier hardware.

- **NOTE\*** These are a tight fit! Soak them in a cup of hot water to soften them. Apply grease to the threads as necessary.



**Congratulations, you have completed installation of your Poison Spyder Rear Bumper!**